

Omega™ - LED Light 30W/40W/50W

With a superior efficacy of greater than 110lm/Watt, LED Light from MIC is a direct replacement for 70W HPSV/ 2x 40W FTL/ 80W CFL/ 4x24W T5 results in savings of more than 65% to municipalities and commercial establishments.

Product advantages

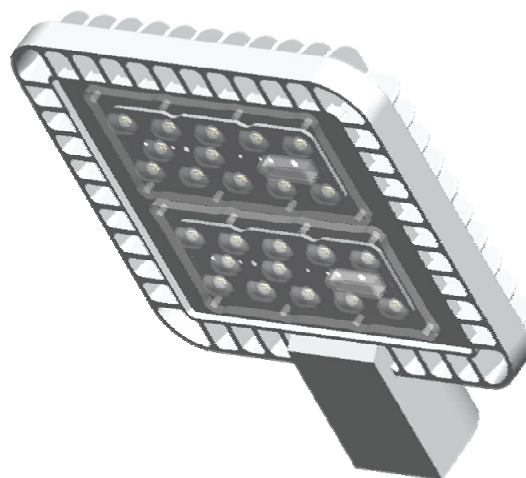
- 110 lm/W system efficacy
- Highly efficient electrical system
- IP 67 (Dust proof and water proof)
- Low Power Consumption (upto 50% less than conventional lights)
- Higher light output even at low temp.
- Available in Type II or Type III lens

Features

	Omega-30	Omega-40	Omega-50
Equivalent to	70W HPSV/ 2x 40W FTL/ 80W CFL/ 4x24W T5		
Operating Voltage (V)	90-300V	90-300V	90-300V
Rated Voltage (V)	220-240V	220-240V	220-240V
Rated Wattage (W)	30	40	50
Frequency (Hz)	50/60Hz	50/60Hz	50/60Hz
Input Current (mA max.)	273	363	400
Power Factor	≥0.95	≥0.95	≥0.95
THD	<10%	<10%	<10%
Surge Protection	20kV/10kA	20kV/10kA	20kV/10kA
Luminous Flux (lm)	3300	4400	5500
Colour Rendering Index (Ra)	>70	>70	>70
Color Temperature (K)	5700	5700	5700
Lamp Efficacy (lm / W)	110	110	110
Rated Lamp Lifetime (h)	50 000	50 000	50 000
Lumen maintenance factor	L70	L70	L70
Starting time	<0.5s	<0.5s	<0.5s
Dimming	Optional	Optional	Optional
Operating temperature	0 ~ 50°C	0 ~ 50°C	0 ~ 50°C

Mechanical

Housing/Casing	Pressure Die cast aluminium
IP Rating	IP 67
Dimensions (mm)	195 x 228 x 60
Net Weight (g)	3.0 Kg
Storage Temperature	-10 ~ 60°C
Humidity	10 ~ 95% RH



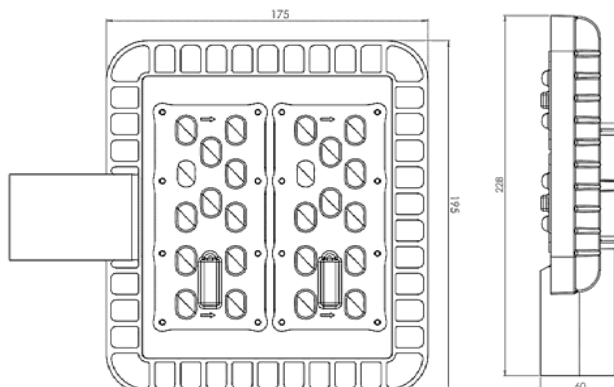
Installation

Mounting arm dia	<50mm ID
Mounting height	6 to 8m

Also available with ceiling/wall/high mast mounting bracket

Packaging details

Gross weight (kg) 3.5	1pc 260 x 280 x 100 mm
-----------------------	------------------------



*Due to continuous improvements, technical specifications are subject to change without prior notice.