

Corona™ - LED Street Light Anchor Light 100-120W

Superior heat transfer is achieved by using high pressure die cast aluminium heat sink to prolong the life of LEDs. 100W LED Street from MIC has a phenomenal driver performance with voltage rating of 90V-300V and efficiency >90%. This is a replacement for conventional 200W HPSV and delivers 10500lm. Also available in high performance variant of 120W. Available in both pole mount and high mast mount options.

■ Product advantages

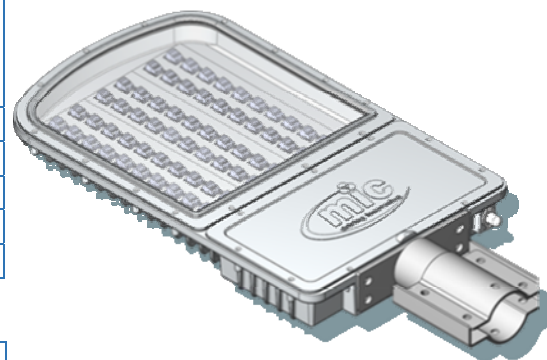
- 105 lm/W system efficacy
- Highly efficient electrical system
- IP 66 (Dust proof and water proof)
- Low Power Consumption (upto 50% less than conventional lights)
- Higher light output even at low temp.
- Available in Type II or Type III lens

■ Features

Model No	Corona-100	Corona-120
Equivalent to	200W HPSV	200W HPSV
Operating Voltage (V)	90-300V	90-300V
Rated Voltage (V)	220-240V	220-240V
Rated Wattage (W)	100	120
Frequency (Hz)	50/60Hz	50/60Hz
Input Current (A max.)	0.9	1.1
Power Factor	≥0.95	≥0.95
THD	<10%	<10%
Surge Protection	20kV/10kA	20kV/10kA
Luminous Flux (lm)	10500	12600
Colour Rendering Index (Ra)	>70	>70
Color Temperature (K)	5700	5700
Lamp Efficacy (lm / W)	105	105
Rated Lamp Lifetime (h)	50 000	50 000
Lumen maintenance factor	L70	L70
Starting time	<0.5s	<0.5s
Dimming	Optional	Optional
Operating temperature	0 ~ 50°C	0 ~ 50°C

■ Mechanical

Housing/Casing	High Pressure Die cast aluminium casing with toughened glass and aluminium front cover
IP Rating	IP 66
Dimensions (mm)	668 x 310 x 67
Net Weight (g)	8Kg
Storage Temperature	-10 ~ 60°C
Humidity	10 ~ 95% RH



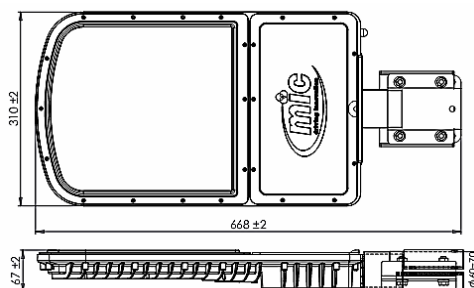
■ Installation

Mounting arm dia	<70mm ID
Mounting height	10 to 12m

Also available with ceiling/wall/high mast mounting bracket

■ Packaging details

Gross weight (kg) 9.0	1pc 750 x 380 x 120 mm
-----------------------	------------------------



*Due to continuous improvements, technical specifications are subject to change without prior notice.